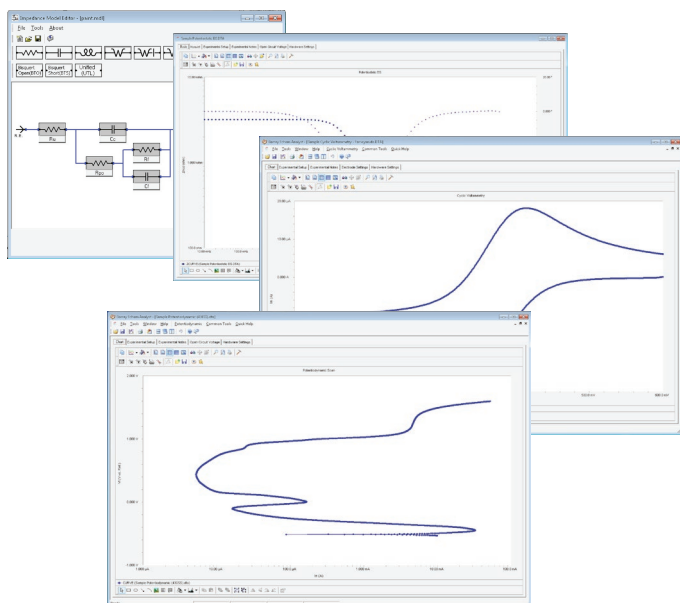




QUICK-START GUIDE

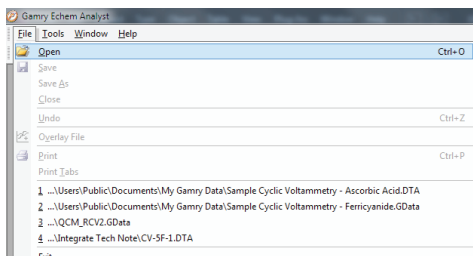


Start-up Guide

Echem Analyst™ software

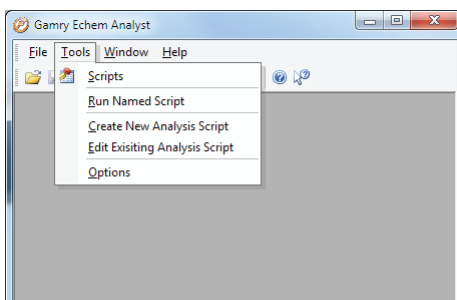
To open a data file (.DTA extension) for analysis:

- 1 In the **File** drop-down menu, choose **Open**.
- 2 In the **Open** window, navigate to the **My Gamry Data** folder.
- 3 Choose the desired .DTA file.



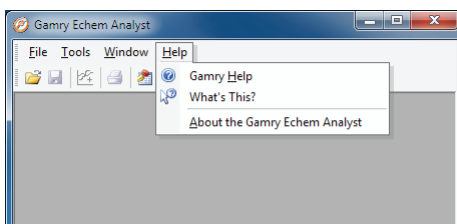
Tools menu

The **Tools** menu is where you can open, edit, and run pre-existing analysis scripts (with extension .GScript), or create a new script in Visual Basic.



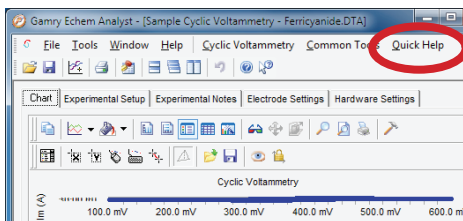
Help menu

The **Help** menu is where you can get general help about the Echem Analyst program.



Quick Help

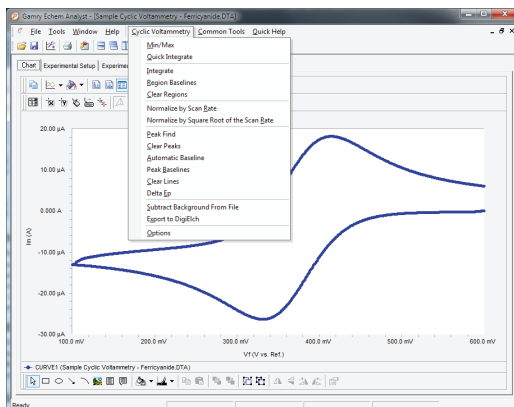
Quick Help appears only if a data file is open. Click **Quick Help** for help about that experiment type.



Experiment-specific tools:

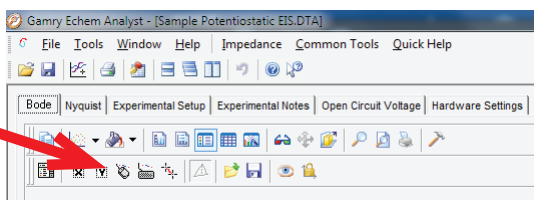
With a data file open, a new menu choice appears, using the name of the type of the experiment. (Here we show a cyclic voltammetry dataset.)

Specific actions related to that particular type of experiment are available in a drop-down menu.



To select a portion of a curve:

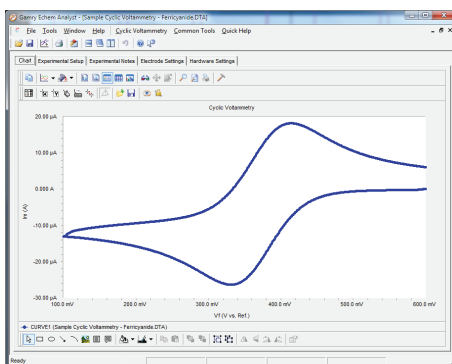
1 Click the **Mouse** button  in the toolbar.



2 Left-click at one endpoint of the desired curve.

3 Left-click at the other endpoint of the desired curve.

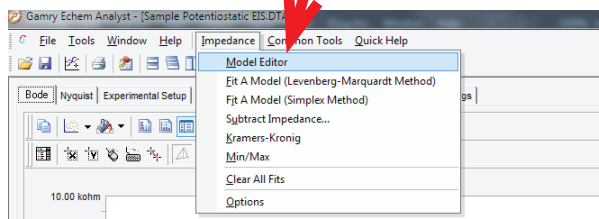
A blue cross appears at each endpoint, and the desired portion of the curve turns blue.



To create a model equivalent circuit:

- 1 With EIS data open, click the **Impedance** drop-down menu, and choose **Model Editor**.

The **Model Editor** opens.

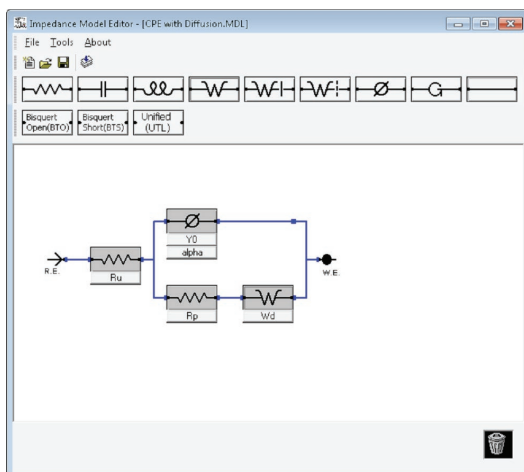


- 2 Click the desired circuit element to place it on the diagram.

- 3 Drag and drop the circuit elements to create an equivalent circuit.

- 4 Connect the elements with wires from heavy dot to heavy dot.

- 5 Connect the circuit to the R.E. (reference electrode) and W.E. (working electrode).



For more details, see the *Echem Analyst User's Guide* (988-00074).

You can find it on your software disc or download it from our website, www.gamry.com