



EIS Box™

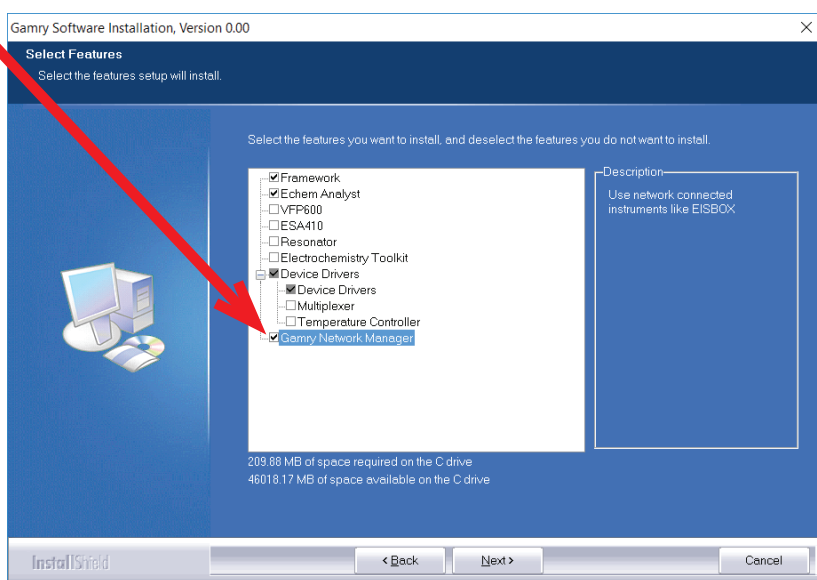
# QUICK-START GUIDE



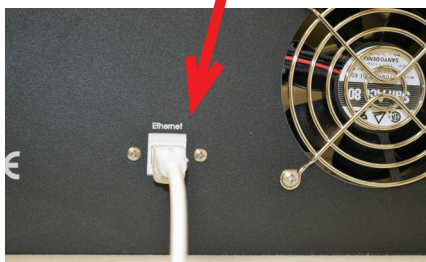
- ① Using a power cord, connect your EIS Box™ from the **AC Input** jack to the AC receptacle (mains).



- ② Install the Gamry Instruments software.  
Be sure that Gamry Network Manager is selected.



- ③ Connect the EIS Box **Ethernet** port to your LAN. (For USB operation, see the User Manual.)



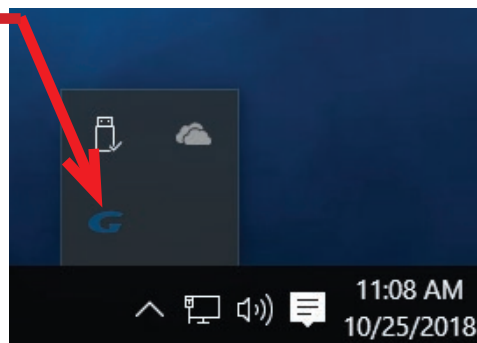
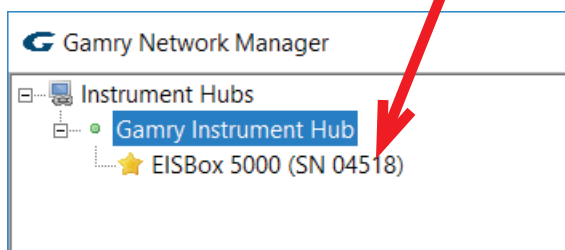
- ④ Switch on the EIS Box using the **Power** switch.



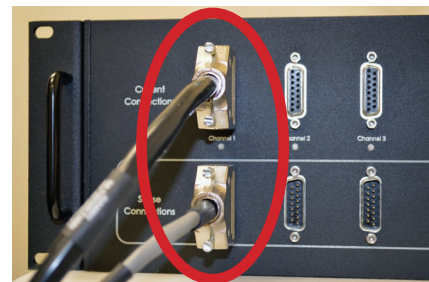
The **Gamry Network Manager** icon (a stylized "G") appears in the Windows® **System Tray**.

Double-click the **G** icon.

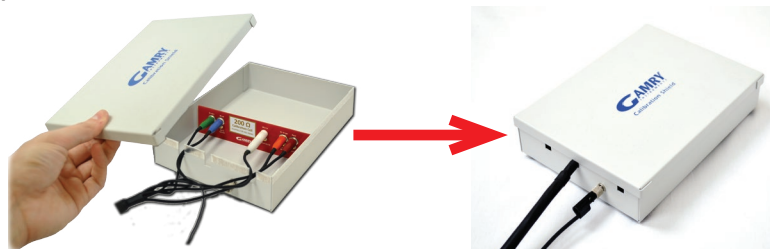
The **Gamry Network Manager** window appears. The EIS Box should also appear in the list of instruments.



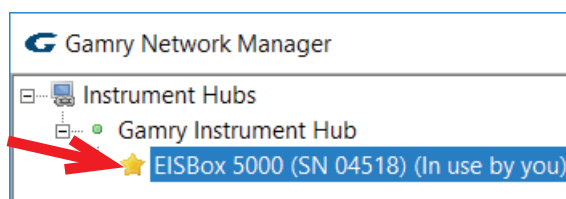
- ⑤ Connect the cell cables from the EIS Box to the **200  $\Omega$  Calibration Cell**. The D-connector ends of the cell cables attach to **Channel 1** on the EIS Box. The banana plugs attach to the correct receptables on the **200  $\Omega$  Calibration Cell**.



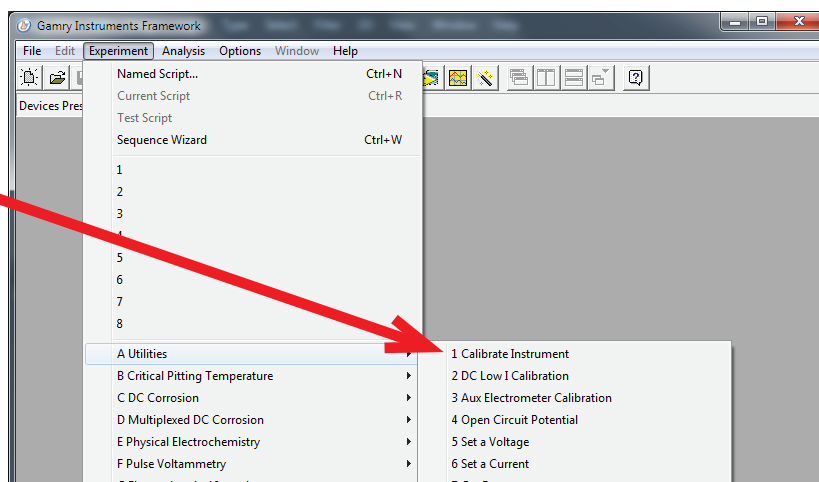
- ⑥ Place the **200  $\Omega$  Calibration Cell** inside the Calibration Shield, close the lid. Connect one end of the separate black grounding cable to the **System Ground** lug on the front panel of the EIS Box. Connect the other end of the grounding cable to the receptacle on the shield.



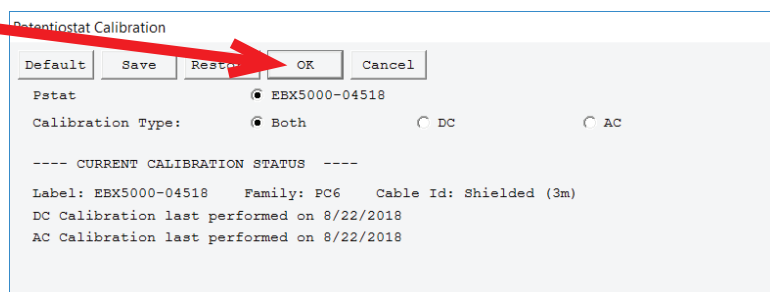
- ⑦ Double-click on the EIS Box in the **Gamry Network Manager** window.



- ⑧ Open Gamry Instruments Framework™ software. Select **Experiment > Utilities > Calibrate Instrument**.



- ⑨ Choose your potentiostat. Select the radio button for calibration type **DC**, and click the **OK** button.



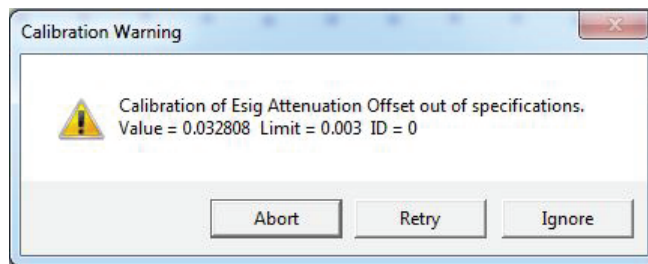
- ⑩ After you confirm several instructional messages, the calibration proceeds automatically, and you are notified if the calibration is successful.

Did you receive a

## CALIBRATION WARNING?

### TROUBLESHOOTING A FAILED CALIBRATION

Calibration is used to check the instrument's health, and to "zero" many of the measurement circuits to your laboratory environment. A warning does not necessarily indicate a critical failure, and Gamry can use calibration information to determine the source of the warning.



- ① Double-check that the correct colors are attached to the Calibration Cell jacks.
- ② Click the **Retry** button, and the rest of the calibration restarts. Click the **Ignore** button for any other calibration warnings that may appear, and continue to Step 3.
- ③ After a failed calibration attempt:
  - Find Calibration Results PC6-#####.txt in your My Gamry Data folder.\*
  - E-mail the file, along with complete contact information, to techsupport@gamry.com

\* ##### is the serial number of your instrument.